

Receiver

Society
Reference
Address
Phone
Fax
E-mail

From

Item n° :

505803001

Model :

A 50/180 M

Pump data

Pressure rating : 145 psi
Min. fluid temperature : -10 °C
Max. fluid temperature : 110 °C

Minimum suction head :

Temperature °C 90
Minimum suction head : m 1,5

Requested data

Flow : 1,20 m³/h
Head : 5,00 m
Fluid (%) :
Fluid Temperature : 20 °C
Density : 998,3 kg/m³
Kinematic viscosity : 1,005 mm²/s
Vapor pressure : 0,34 psi

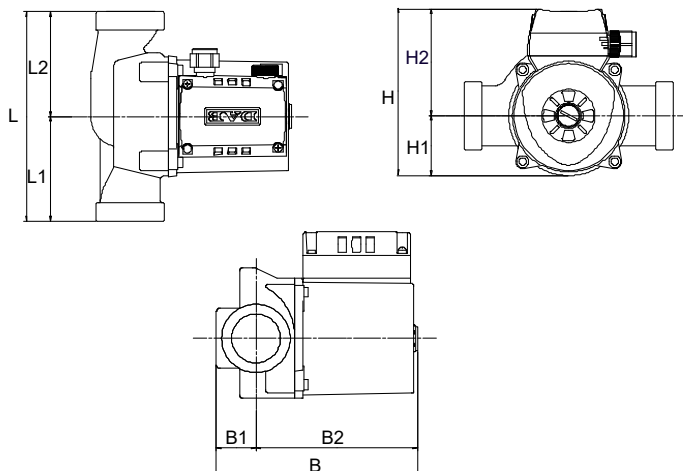
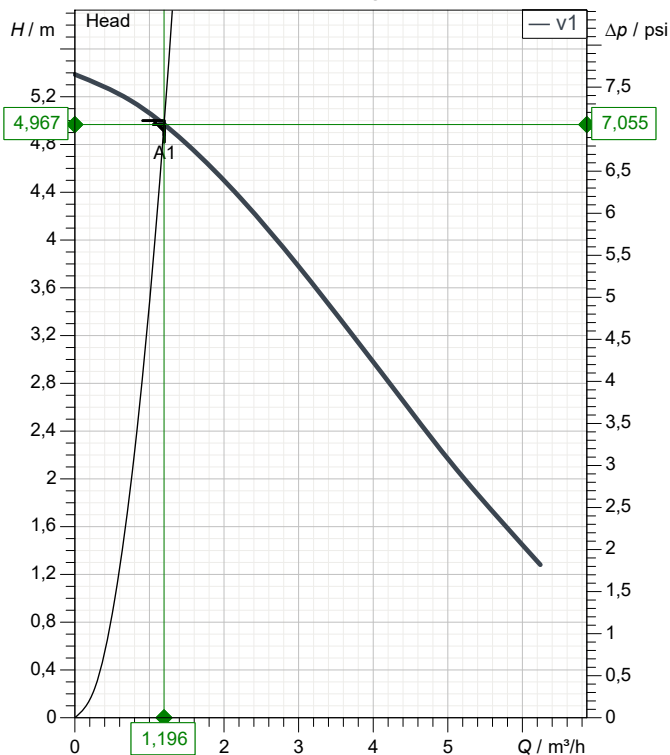
Hydraulic data (duty point)

Flow : 1,20 m³/h
Head : 4,97 m

Materials

Pump body Cast iron
Impeller Technopolymer
Motor shaft Stainless steel
Air vent plug Brass
Seal ring Etyilene propylene
Motor casing Die cast aluminium
Stator jacket Stainless steel

Curve tolerance according to ISO 9906



Motor data

Motor brand : DAB
Power input P1 : 0,18 kW
Rated speed : 2.215 1/min
Rated voltage : 1~ 230 V 50 Hz
Nominal current : 0,85 A
Degree of protection : IP 44

Dimensions in mm

B	173	H	143	L1	90
B1	34	H1	52	L2	90
B2	139	H2	92		
F	0	L	180		

Weight : 4,8 kg

Pump connection

Suction side : 1 " 1/2 / 145 psi
Discharge side : 1 " 1/2 / 145 psi

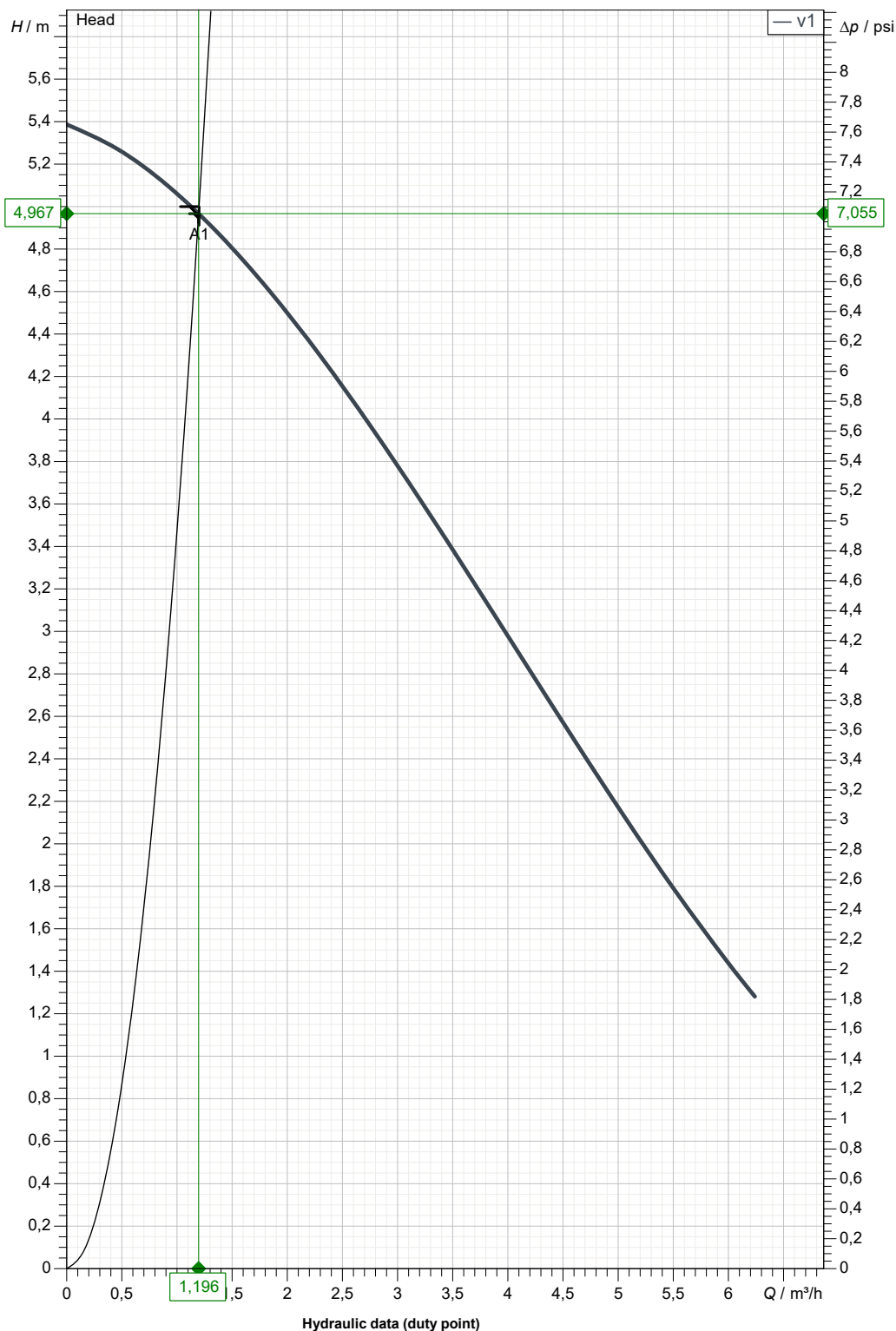
Receiver

From

Society
Reference
Address
Phone
Fax
E-mail

A 50/180 M

Curve tolerance according to ISO 9906



Suction side :
1" 1/2
145 psi

Discharge side :
1" 1/2
145 psi

Flow :
1.2 m³/h

Head :
5 m

Rated speed :
2.215 1/min

MAIN_PROJECT_TITLE

BUSINESS_PROCESS_IT

OWNER_

ISSUE_DATE

2022-06-16

